

PROJECT INFORMATION

Project Address
[REDACTED]

Code
CBC 2016

Assessors Parcel Number
APN: 25026009

Owner/Applicant
[REDACTED]

Zoning
M-1 LIGHT INDUSTRIAL
WAREHOUSE DISTRIBUTION

Applicant's Representative
[REDACTED]

CONTACT:
PHONE: [REDACTED]

TABULATION



SITE PLAN GENERAL NOTES

- CONCRETE PAVING
SEE "C" DRWGS. FOR THICKNESS

STANDARD PARKING STALL
(9' X 18' + 2' O.H.)

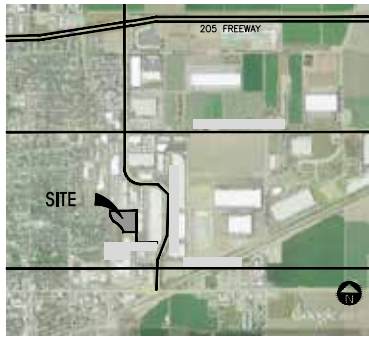
①

TRAILER PARKING (10' X 53')
- ACCESSIBLE PARKING
STALL (9' X 20') + 5' W/ ACCESSIBLE AISLE

ACCESSIBLE PARKING (VAN)
STALL (9' X 20') + 8' W/ ACCESSIBLE AISLE
- PATH OF TRAVEL. MINIMUM WIDTH TO BE
4'. SLOPE NOT TO EXCEED 5% IN THE
DIRECTION OF TRAVEL AND CROSS SLOPE
NOT TO EXCEED 2%. SEE CIVIL FOR
GRADING PLAN

LANDSCAPED AREA

VICINITY MAP



SITE PLAN KEYNOTES

- ① HEAVY BROOM FINISH CONCRETE PAVEMENT.
- ② ASPHALT CONCRETE (AC) PAVING
- ③ ACCESSIBLE PATH OF TRAVEL
- ④ DRIVEWAY APRONS
- ⑤ 5'-6"X5'-6"X4" THICK CONCRETE EXTERIOR LANDING PAD TYP. AT ALL EXTERIOR MAN DOORS
TO LANDSCAPED AREAS. FINISH TO BE MEDIUM BROOM FINISH. SLOPE TO BE
1/4" : 12" MAX.
- ⑥ APPROXIMATE LOCATION OF TRANSFORMER.
- ⑦A 8" HIGH METAL GATES W/ KNOX-BOX PER FIRE DEPARTMENT STANDARDS
- ⑦B 8" HIGH CHAIN LINK FENCE
- ⑦C 8" HIGH CHAIN-LINK GATE
- ⑧ CONCRETE WALKWAY, MEDIUM BROOM FINISH.
- ⑨ CONCRETE RAMP WITH CONCRETE GUARD WALL.
- ⑩ BIKE RACK.
- ⑪ FUTURE ELECTRIC VEHICLE CHARGER.
- ⑫A EXTERIOR METAL STEEL STAIR.
- ⑫B NOT USED.
- ⑬ 12' x 14' DRIVE-IN DOOR
- ⑭ LANDSCAPE.
- ⑮ CONC. FILLED GUARD POST 6" DIA. U.N.O. 48" H.
- ⑯ PRE-CAST CONC. WHEEL STOP AT ADA-COMPLAINT PARKING STALLS
- ⑰ TRUNCATED DOMES.
- ⑱ ACCESSIBLE PARKING STALL SIGN.
- ⑲ HARDSCAPE AT ENTRANCE.
- ⑳ ACCESSIBLE ENTRY SIGN.
- ㉑ PUMP HOUSE. SEE DAB-AD.7
- ㉒ TRASH ENCLOSURE. SEE DAB-AD.7
- ㉓ ELECTRICAL ROOM.
- ㉔ CONCRETE DOLLY PAD.
- ㉕ 8'-FT. TALL MASONRY WALL
- ㉖ NOT USED.
- ㉗ PG&E POWER POLE/POWER LINE
- ㉘ STORM TREATMENT SEE CIVIL

LOCATION OF AREA OF REFUGE
(APPROX. 1,000 SF)

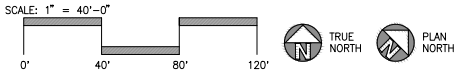
EXISTING RAIL SPUR

EXISTING RAIL SPUR

LOCATION OF AREA OF REFUGE
(APPROX. 1,000 SF)

EXISTING
RAIL SPUR

OVERALL SITE PLAN
scale: 1"=40'-0"



tel:
fax:
email:

Owner:

Project:

Consultants:

Civil:
Structural:
Mechanical:
Plumbing:
Electrical:
Landscape:
Fire Protection:
Soils Engineer:

Title: Overall site plan

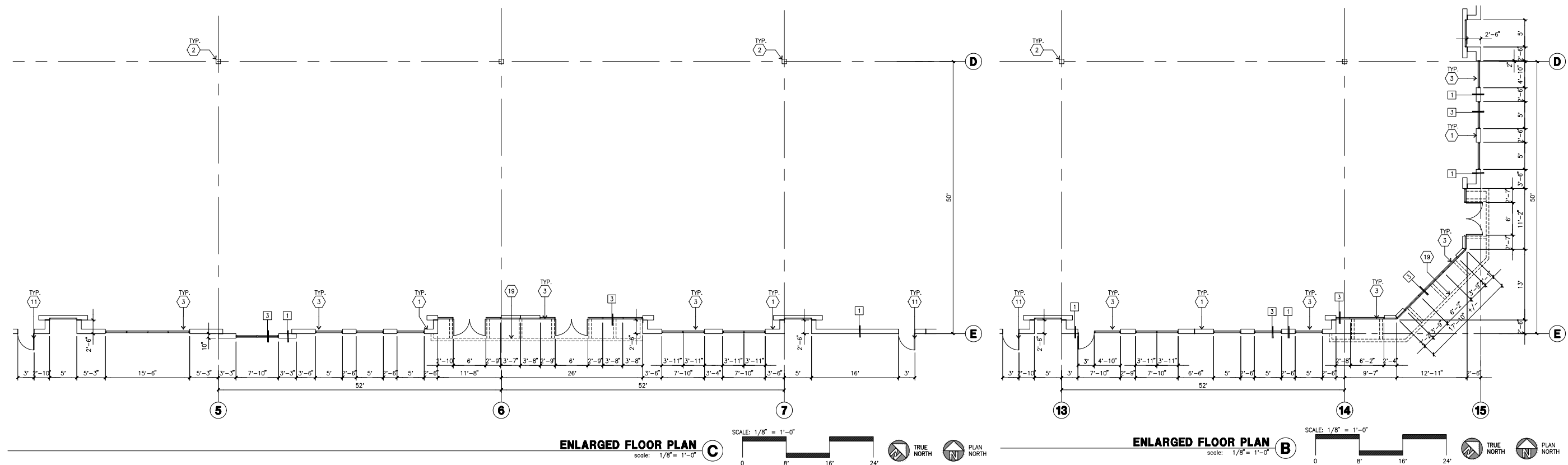
Project Number:
Drawn by: JS
Date: 10/18/2018
Revision:

Sheet:

DAB-1.1

- 1 CONCRETE TILT-UP PANEL.
- 2 STRUCTURAL STEEL COLUMN.
- 3 TYPICAL STOREFRONT SYSTEM WITH GLAZING. SEE ENLARGED PLANS AND ELEVATIONS FOR SIZE, COLOR AND LOCATIONS.
- 4 CONCRETE RAMP W/ 4" H² HIGH CONC TILT-UP GUARD WALL OR BUILDING WALL ON BOTH SIDES OF RAMP.
- 5 9' X 10' DOCK DOOR, SECTIONAL O.H., STANDARD GRADE. DESIGNED TO RESIST CITY REQUIRED WIND SPEED.
- 6 EXTERIOR METAL STEEL STAIR.
- 7 EXTERIOR CONCRETE STAIR.
- 8 5'-0" WIDE CONC. CONCRETE EXTERIOR LANDING PAD TYPICAL AT ALL EXTERIOR MAIN DOORS TO LANDSCAPED AREA. FINISH TO BE MED. BROWN FLUSH. SLOPE TO BE 1/4" : 12" MAX.
- 9 4'X8' METAL LOUVER.
- 10 DOCK DOOR BUMPER.
- 11 12" X 14" DRIVE RAMP, SECTIONAL O.H., STANDARD GRADE. DESIGNED TO RESIST CITY REQUIRED WIND SPEED.
- 12 3' X 7' HOLLOW METAL EXTERIOR MAIN DOOR.
- 13 DESIGNED TO RESIST CITY REQUIRED WIND SPEED.
- 14 CONC. FILLED GUARD POST, 6" DIA. U.N.C., 48"H.
- 15 EXTERIOR DOWNSPOUT WITH OVERFLOW SCUPPER.
- 16 INTERIOR ROOF DRAIN & OVERFLOW SCUPPERS.
- 17 INTERIOR ROOF DRAIN WITH PIPED OVERFLOW.
- 18 Z GUARD.
- 19 INTERIOR BIKE RACK.
- 20 ELECTRICAL ROOM.
- 21 METAL CANOPY ABOVE.

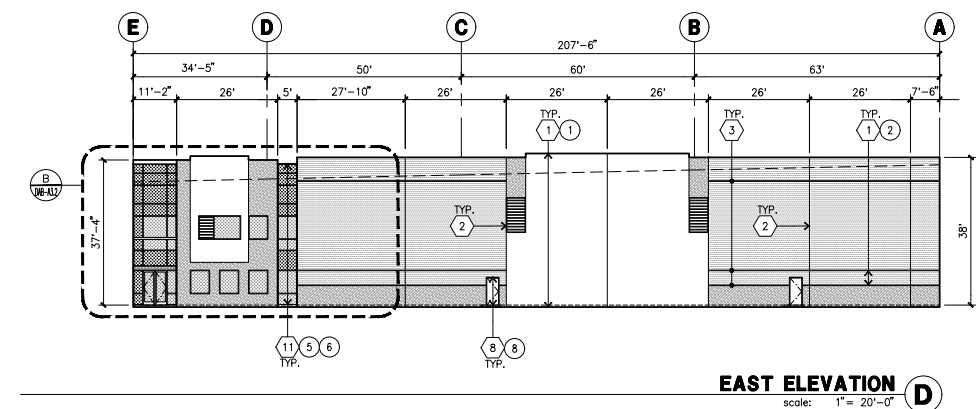
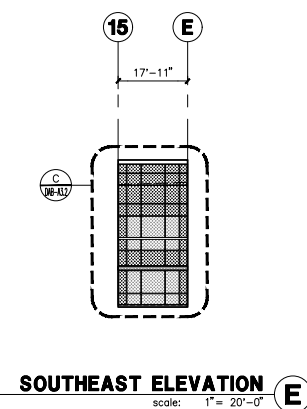
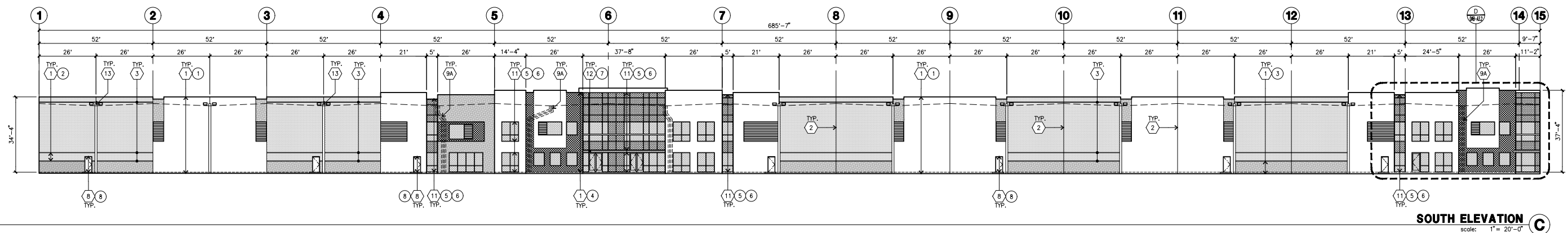
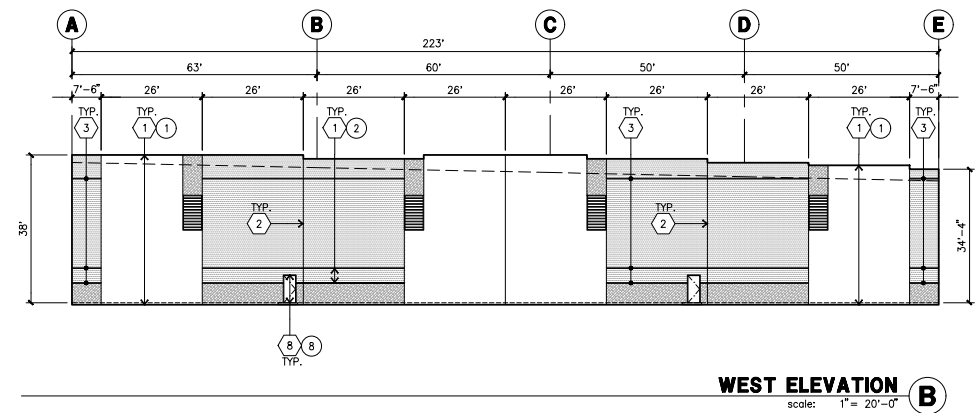
1. THIS BUILDING IS DESIGNED FOR HIGH FLOOR STORAGE WITH FIRE ACCESS MAN DOORS AT 100' +/-, A SEPARATE PERMIT WILL BE REQUIRED FOR ANY RACKING/CONVEYER SYSTEMS, INSURE HEAT AND SMOKE VENTS AS REQ'D COMPLY WITH TABLE 910.3 CBC
2. FIRE HOSE LOCATIONS SHALL BE APPROVED PER FIRE DEPARTMENT.
3. SEE "C" DRAWINGS FOR FINISH SURFACE ELEVATIONS.
4. WAREHOUSE INTERIOR ALL CONCRETE WALLS ARE PAINTED WHITE. COLUMNS ARE TO RECEIVE PRIMER ONLY. GY. BD. WALLS IN WAREHOUSE TO RECEIVE 1 COAT OF WHITE TO COVER.
5. THE BUILDING FLOOR SLAB IS FLAT/SLOPED, SEE CIVIL.
6. SLOPE FOUR STRIP 1/2" TO EXTERIOR AT ALL RANDOR EXITS. SEE "S" DRAWINGS FOR FOUR STRIP LOCATION.
7. PROVIDE 4" DIA. CONCRETE BOLLARD AT ALL FIRE RISER AND UNPROTECTED INTERIOR ROOF DRAIN.
8. ALL DIMENSIONS ARE TO THE FACE OF CONCRETE PANEL WALL, GIRDLINE, OR FACE OF STUD U.N.O.
9. SEE CIV. DRAWINGS FOR POINT OF CONNECTIONS TO OFF-SITE UTILITIES, CONTRACTOR TO VERIFY ACTUAL UTILITY LOCATIONS. PLUMBING/ELECTRICAL COORDINATION.
10. FOR DOOR TYPES AND SIZES, SEE DETAIL SHEET 1-6. NOTE: ALL DOORS PER DOOR SCHEDULE ARE FINISH EXTERIOR.
11. CONTRACTOR TO PROTECT AND KEEP THE FLOOR SLAB CLEAN. ALL EQUIPMENT TO BE DIAPHER INCLUDING CARS AND TRUCKS.
12. ALL EXIT MAN DOORS IN WAREHOUSE TO HAVE ILLUMINATED EXIT SIGN HARDWARE.
13. HIGHLY FLAMMABLE AND COMBUSTIBLE MATERIAL SHALL NOT BE USED OR STORED IN THIS BUILDING.
14. PROVIDE FIRE EXTINGUISHERS AT LOCATIONS DETERMINED BY FIRE DEPARTMENT.
15. EACH EXTERIOR EXIT DOOR SHALL BE IDENTIFIED BY A TACTILE EXIT SIGN WITH THE WORDS "EXIT". THE MOUNTING HEIGHT FOR SUCH SIGNAGE SHALL BE 60" FROM FINIS FLOOR LEVEL, TO THE CENTER OF THE SIGN.
16. AFTER ALL ACCESSIBILITY SYMBOLS ON ALL ACCESSIBLE ENTRANCES PER CBC 11B-216.6
17. ALL INTERIOR AND EXTERIOR WALKING SURFACES TO BE NON-SLIP TYPE






1 CONCRETE TILT-UP WALL.

3 STOREFRONT SYSTEM.

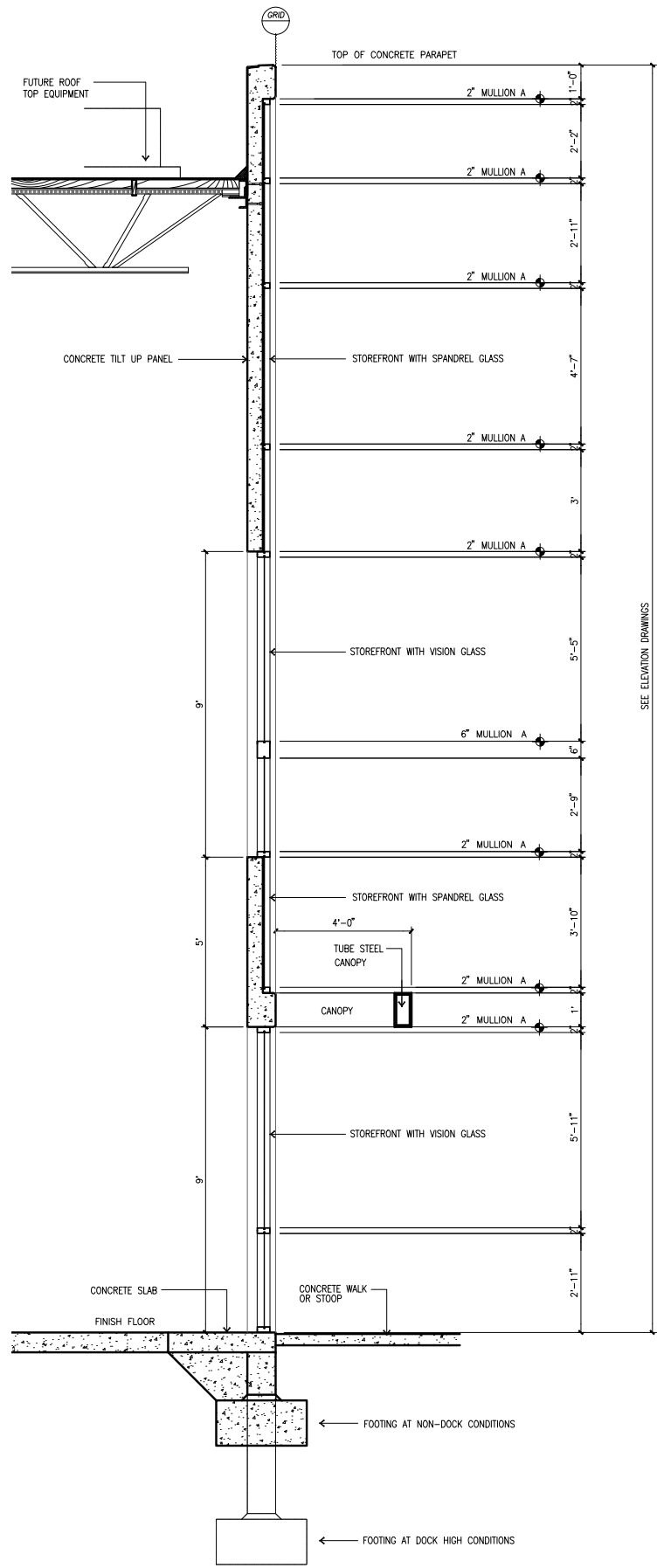
DAB-2.1



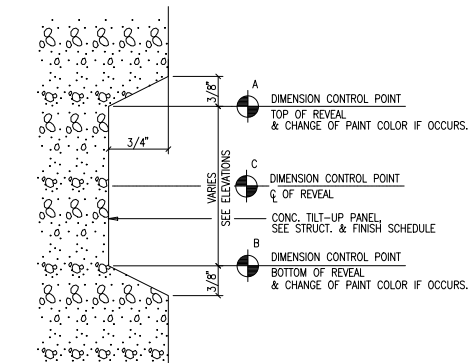
GLAZING LEGEND

- NOTE: ALL EXTERIOR AND INTERIOR GLAZING SHALL BE TEMPERED.
- | | |
|---|--|
|  <p>INSULATED VISION GLASS</p> |  <p>SPANDREL GLASS
WITH CONCRETE BEHIND</p> |
|---|--|
- 
 SINGLE LITE
VISION GLASS
- IV : INSULATED VISION GLASS
- 1/4" VISTACOLOR, PACIFICA + 1/4" SOLARBAN 60 CLEAR
 1" INSULATED GLASS UNIT WITH 1/2" AIRSPACE AND 1/4" LITES
 U: 0.27 SHGC: 0.21 UV: 26%
 MINIMUM V: TO 0.42 PER 2010 CBC TABLE 140.3-B
- SC : SPANDREL WITH CONCRETE BEHIND
- 1/4" VISTACOLOR, PACIFICA WITH WARM GRAY OPACICOAT PAINTED ON REFLECTIVE,
 INSTALLED ON CONCRETE.
- V : VISION GLASS
- 1/4" VISTACOLOR, PACIFICA
- MULLIONS : ANODIZED CLEAR.

DAB-3.1

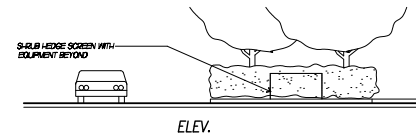
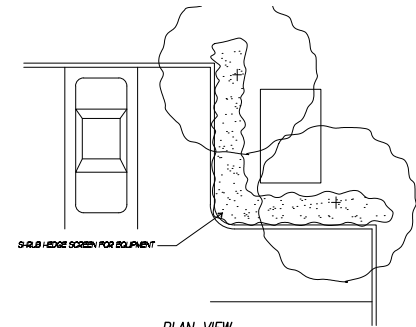


TYPICAL OFFICE STOREFRONT SECTION (A)
scale: 1/2" = 1'-0"

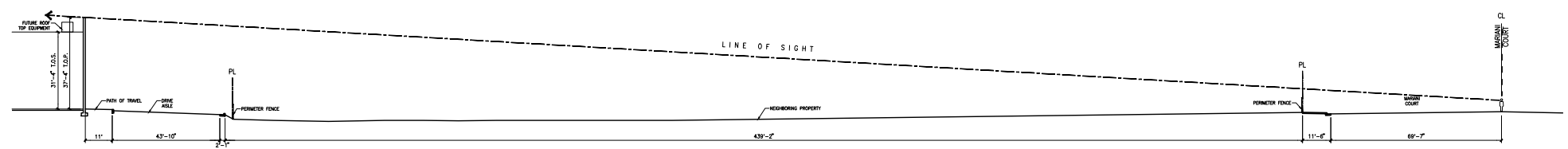


NOTES:
1. DIMENSION CONTROL POINTS AT REVEALS AND EDGE OF CONCRETE OPENINGS WHERE OCCUR, SEE WALL SECTIONS.
2. PAINT COLOR CHANGES TO ALWAYS OCCUR AT CONTROL POINT "A" OR "B"

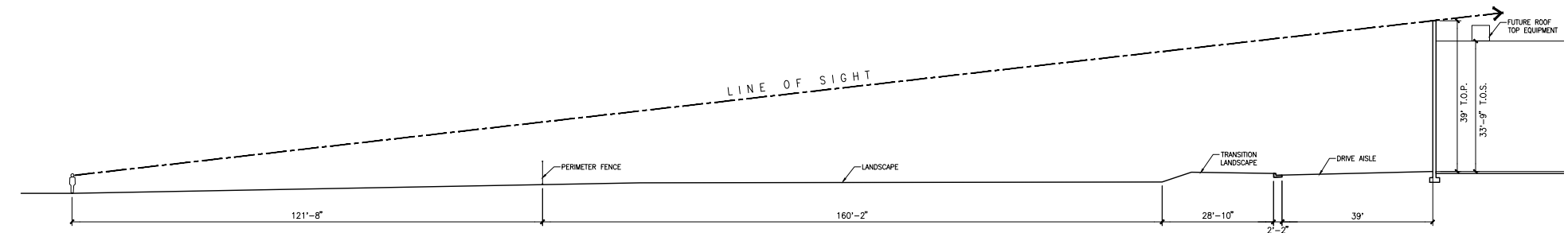
TYPICAL CONCRETE REVEAL (B)
scale: N.T.S.



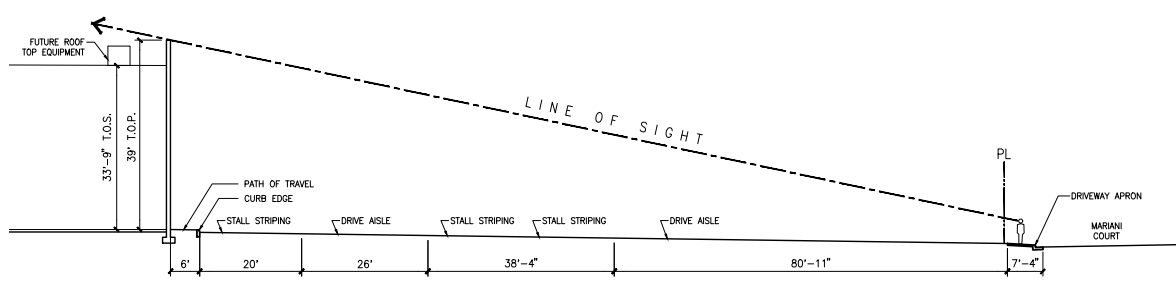
GROUND MOUNTED EQUIPMENT SCREENING, TYP. (C)
scale: N.T.S.



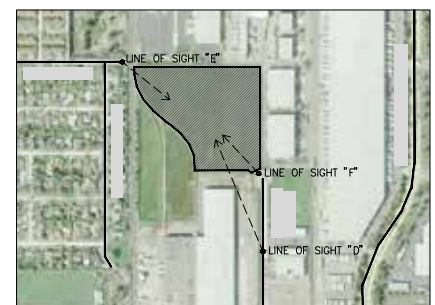
LINE OF SIGHT (D) ALONG (D)
scale: N.T.S.



LINE OF SIGHT (E) FROM ACACIA ST (E)
scale: N.T.S.



LINE OF SIGHT (F) AT MAIN ENTRANCE (F)
scale: N.T.S.



SITE PLAN KEY (G)
scale: N.T.S.

tel:
fax:
email:

Owner:

Project:

Consultants:

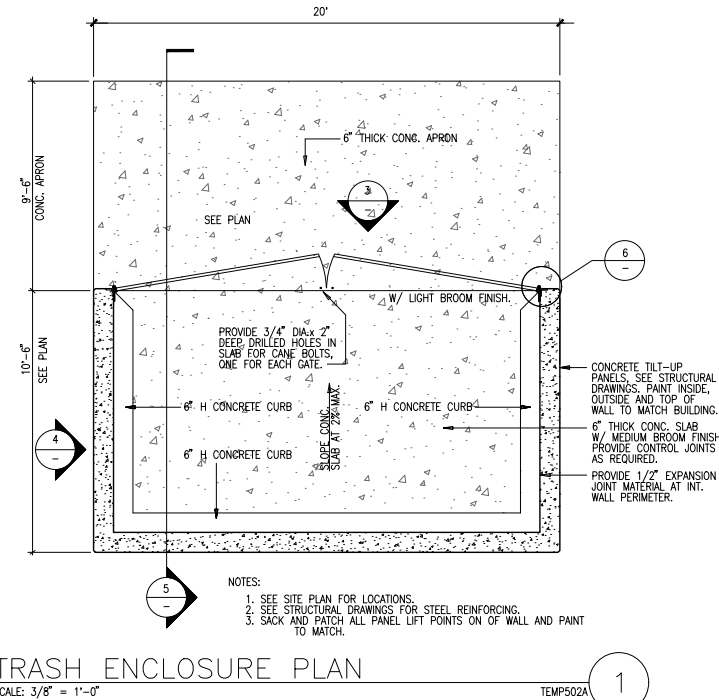
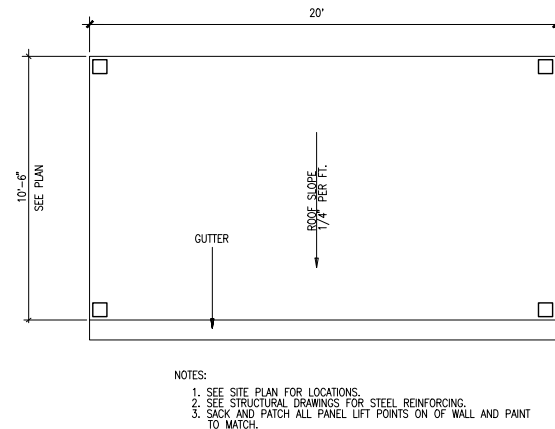
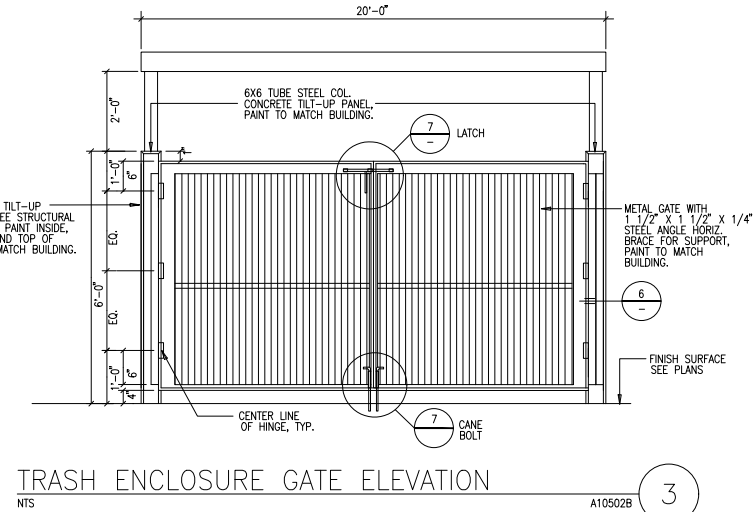
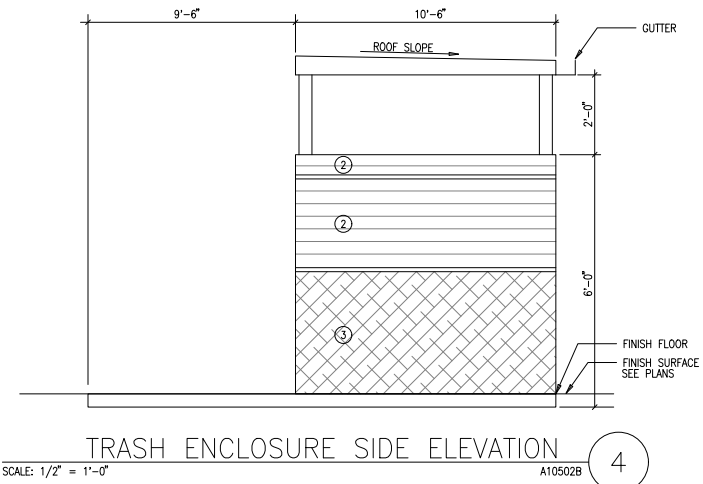
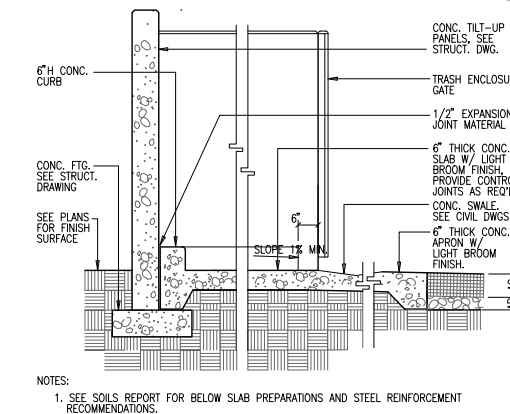
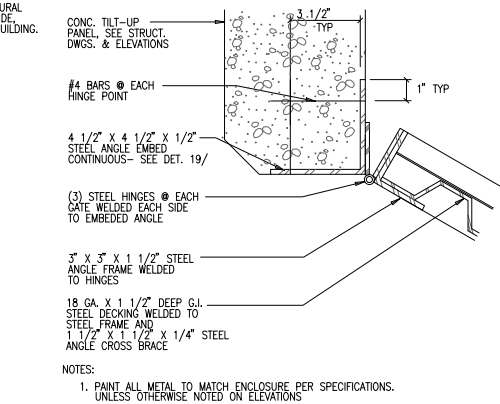
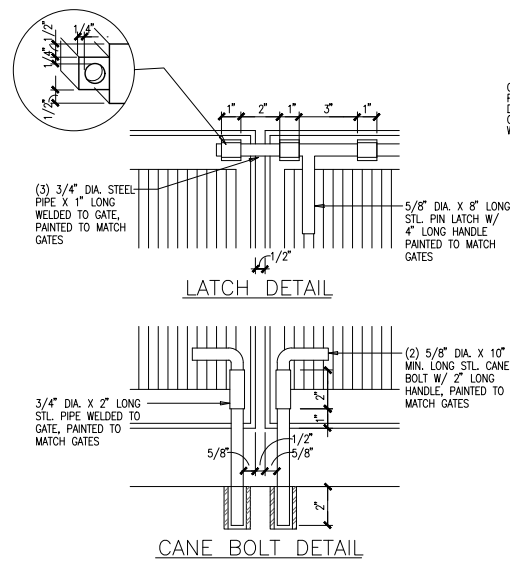
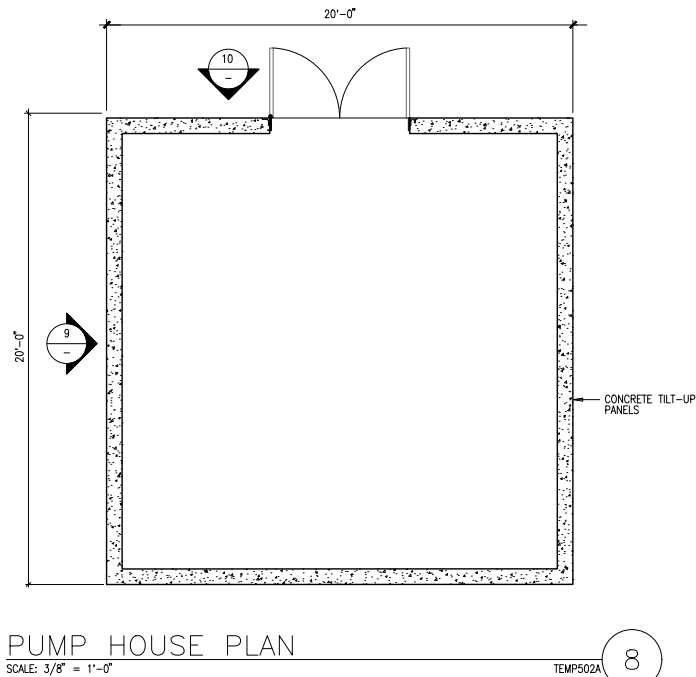
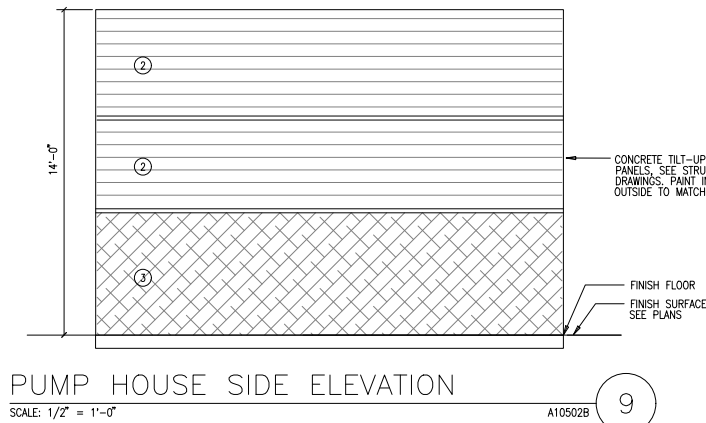
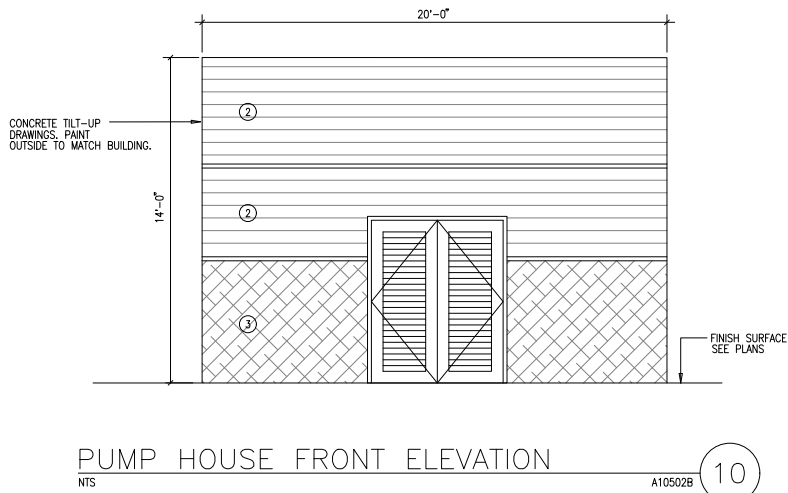
Civil:
Structural:
Mechanical:
Plumbing:
Electrical:
Landscape:
Fire Protection:
Soils Engineer:

Title: Details

Project Number:
Drawn by: JS
Date: 10/18/2018
Revision:

Sheet:

DAB-4.1



tel:
fax:
email:

Owner:

Project:

Consultants:

Civil:
Structural:
Mechanical:
Plumbing:
Electrical:
Landscape:
Fire Protection:
Soils Engineer:

Title: Details

Project Number:
Drawn by: JS
Date: 10/18/2018
Revision:

Sheet:

DAB-AD.7

NOTE: CONTRACTOR SHALL
CONTACT GOVERNING AGENCY
TO OBTAIN REQUIRED INFORMATION
AND SHALL COMPLETE SIGN TEXT.

- SAFETY NOTES
FOR THE PROPER OPERATION AND
MAINTENANCE OF THE WROUGHT IRON GATES
1. THIS GATE IS UNSAFE FOR OPERATIONS
IN HEAVY WIND LOADS 15 MPH OR
GREATER.
 2. GATE CAN NOT BE OPERATED IN
IN WINDS IN EXCESS OF 15 MPH.
 3. GATE NEEDS TO BE LOCKED IN EITHER
THE OPEN OR CLOSED POSITION AT
ALL TIMES.
 4. NO SCREENING OF ANY KIND IS
ALLOWED ON THE GATE.
 5. ALL GATES TO BE MECHANICALLY
OPERATED.
 6. GATE OPERATOR IS RESPONSIBLE FOR
THE SAFETY OF PEOPLE AND PROPERTY.

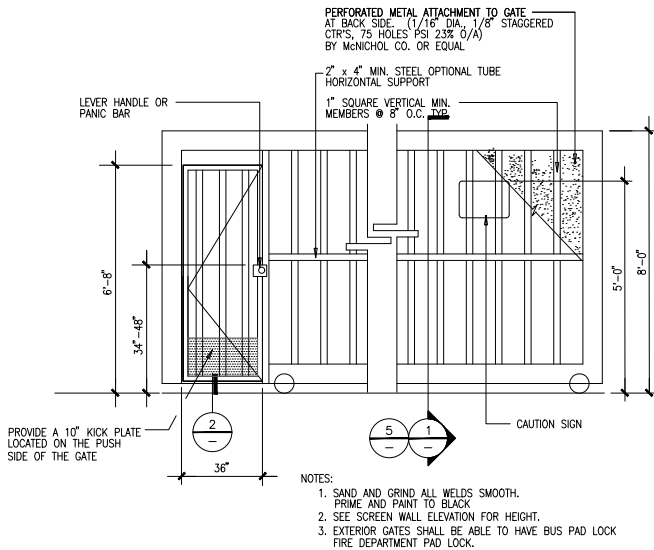
- NOTES:
1. MIN. 1" HIGH TEXT.
 2. SIGNS SHALL BE PERMANENTLY AFFIXED REFLECTORIZED SIGN OF
PORCELAIN ON STEEL WITH BEADED TEXT OR EQUAL MOUNTED AT A
HEIGHT OF 60" ABOVE FINISHED GRADE, TO TOP OF SIGN.
 3. THIS SIGN IS TO BE POSTED ON THE EXTERIOR SIDE OF EACH GATE OR PAIR OF GATES.

METAL GATE SAFETY SIGN

SCALE: N.T.S.

02890-SGATE-SIGN1

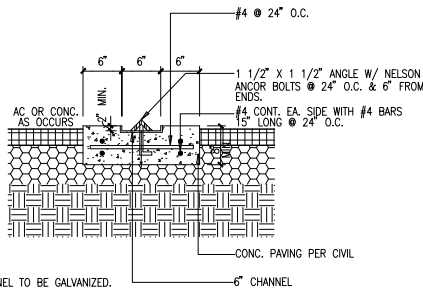
4



METAL GATE

SCALE: 1/2" = 1'-0"

3



GATE TRACK @ DRIVE SINGLE SLIDING

SCALE: 1" = 1'-0"

2

NOTE: CONTRACTOR SHALL
CONTACT GOVERNING AGENCY
TO OBTAIN REQUIRED INFORMATION
AND SHALL COMPLETE SIGN TEXT.

CAUTION

USE OF GATE UNDER WINDY
CONDITIONS IS PROHIBITED
LEAVE GATE LOCKED OPEN
OR LOCKED CLOSED

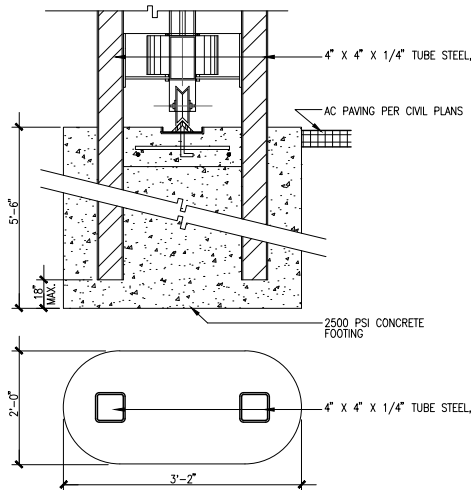
- NOTES:
1. SIGNS SHALL BE PERMANENTLY AFFIXED REFLECTORIZED SIGN OF
PORCELAIN ON STEEL WITH BEADED TEXT OR EQUAL MOUNTED AT A
HEIGHT OF 60" ABOVE FINISHED GRADE, TO TOP OF SIGN.
 2. SIGNAGE SHALL CONFORM TO SEC. 4.30 OF THE AMERICANS WITH DISABILITIES ACT.
 3. THIS SIGN IS TO BE POSTED ON THE EXTERIOR SIDE OF EACH GATE OR PAIR OF GATES.

W.I. GATE SAFETY SIGN

SCALE: N.T.S.

02890-SGATE-SIGN2

6

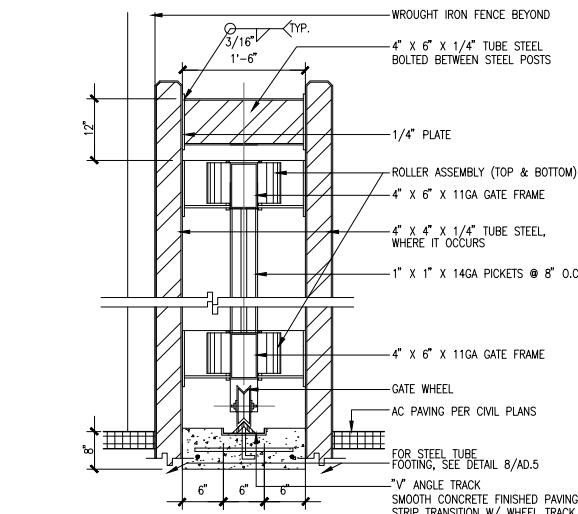


GATE FOOTING @ FENCE CONDITION

SCALE: 1 1/2" = 1'-0"

02820-SGATE-2B

5



ROLLING GATE W/ FENCE

SCALE: 1 1/2" = 1'-0"

02820-SGATE-3A

1

Owner:

Project:

Consultants:

Civil:
Structural:
Mechanical:
Plumbing:
Electrical:
Landscape:
Fire Protection:
Soils Engineer:

Title: Details

Project Number:
Drawn by: JS
Date: 10/18/2018
Revision:

Sheet:

DAB-AD.8